

Aerowerks Waste Collector



Designed For Extremely Demanding Food Waste Handling.



WATCH
OUR WASTE
COLLECTOR
VIDEO



Salient Features



Water Usage Savings

- Recirculating water reduces fresh water and sewage costs, consuming no more than 2 gallons of fresh water per minute
- Unit is equipped with accurate float sensor to ensure no overflow of water

Design Flexibility

- Trough feed or free-standing configuration
- Side gushers installed in the waste trough for handsfree pre-scraping, reducing excessive food soiled in the dishes for subsequent washing by the dishwasher
- Large inlet to accommodate steep sloped trough to drive the food wastes down the unit

Large Capacity

- Innovative 2-tiered design to handle large volume of food wastes with multiple basket strainers, making it easier for the operator to swap the basket during the operation

Easy of Use

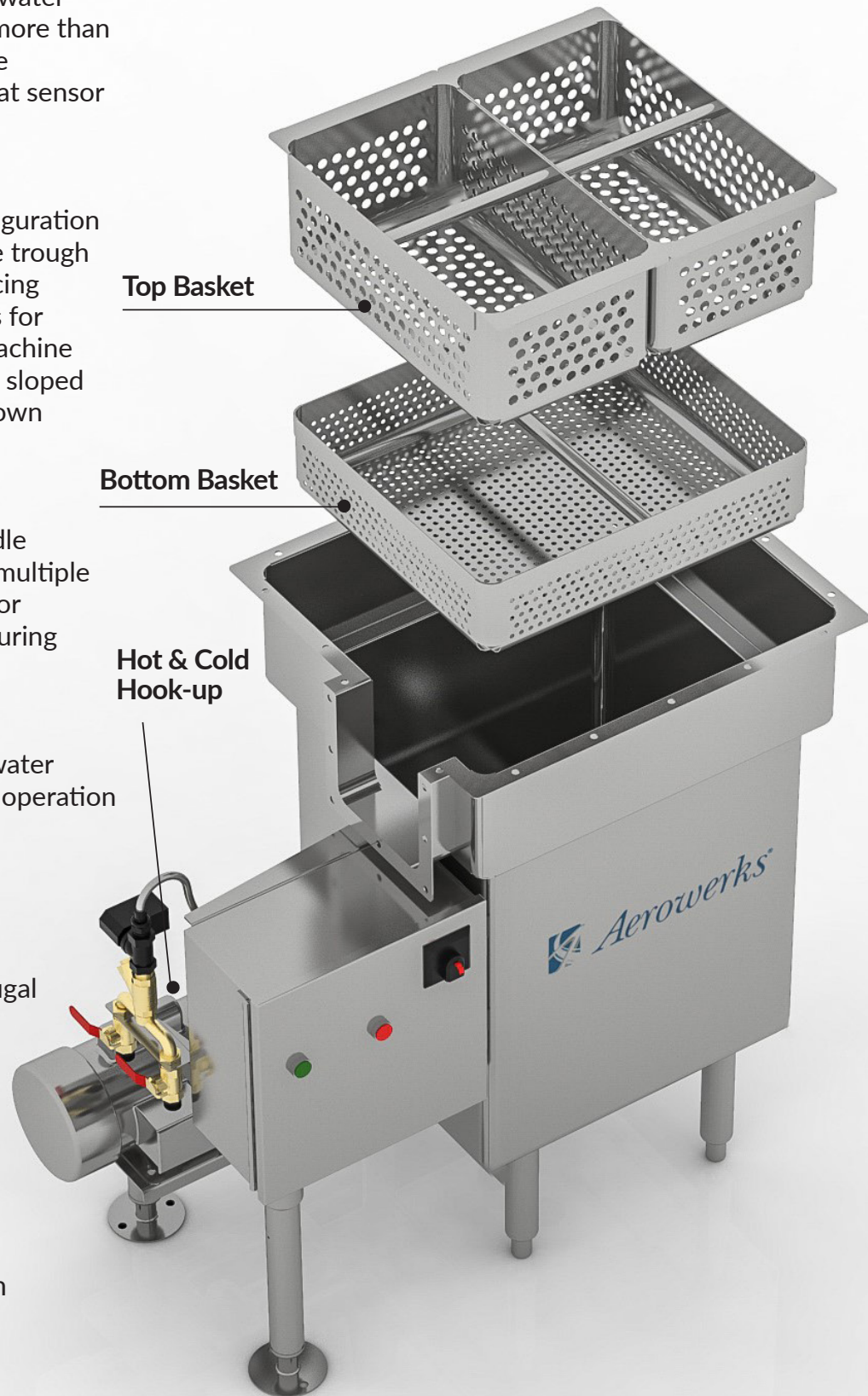
- One push button operation with water filled to the right level to start the operation

Powerful Robust Design

- Type 300 series stainless, 14 gage stainless steel construction
- Heavy duty stainless steel centrifugal pump and impeller
- Flow rates 70 gallon per minute

Single point connection for integral system

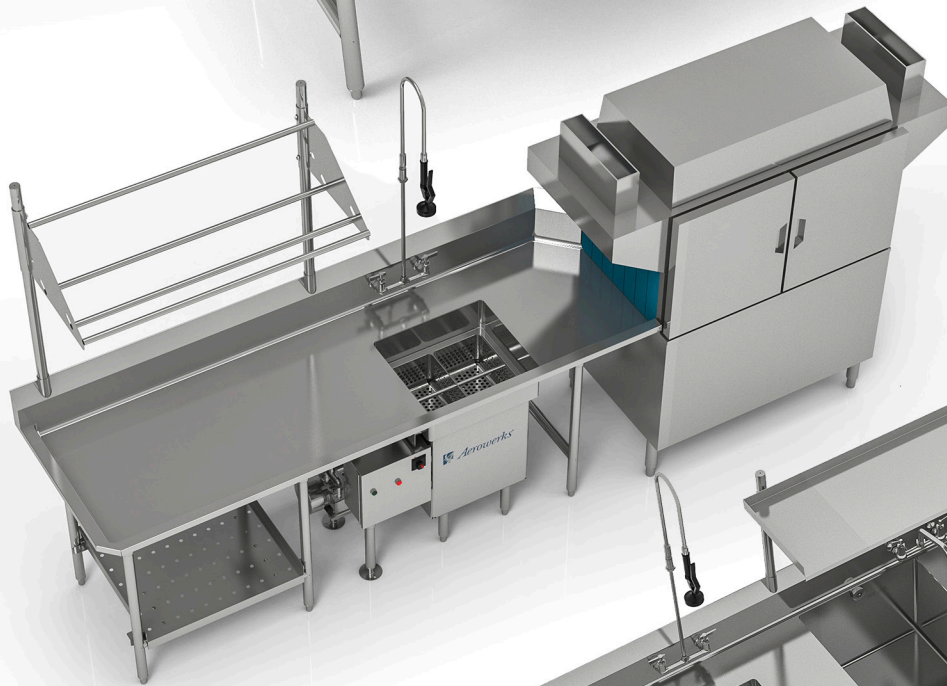
- Waste collector with optional soiled dishtable furnished by Aerowerks is pre-plumbed to dishtable trough, all gushers with water and check valves from the factory for easy single point field connection



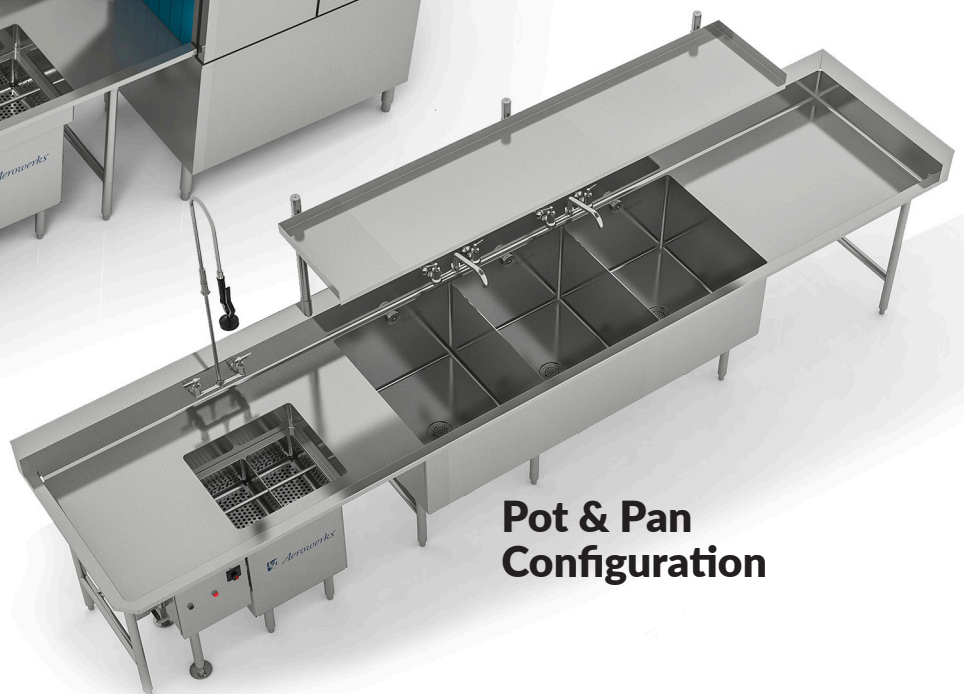
Single point connection for integral system Waste Collector with optional soiled dishtable furnished by Aerowerks is pre-plumbed to dishtable trough with all gushers with water & check valves from the factory for easy single point field connection.



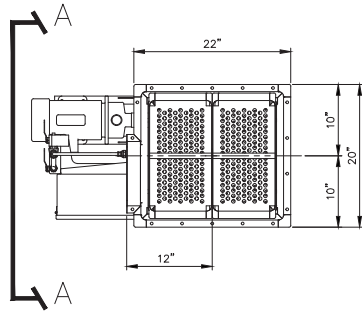
**Large Inlet With
Steep Trough**



**Free-Standing
Configuration**



**Pot & Pan
Configuration**



PLAN VIEW

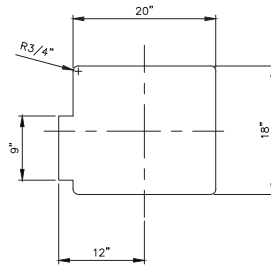
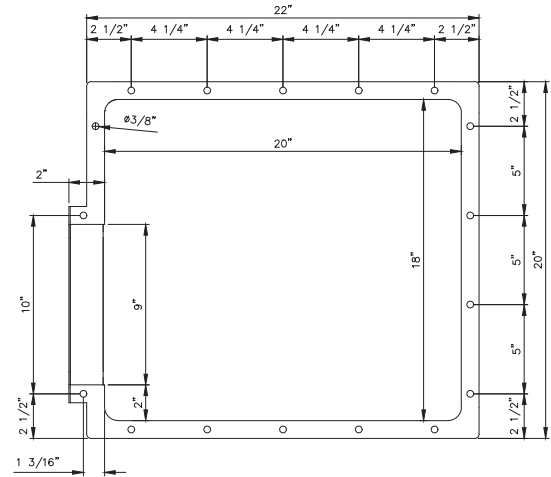
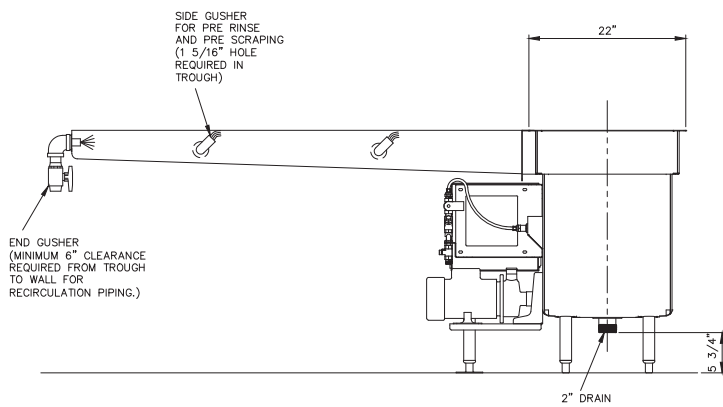


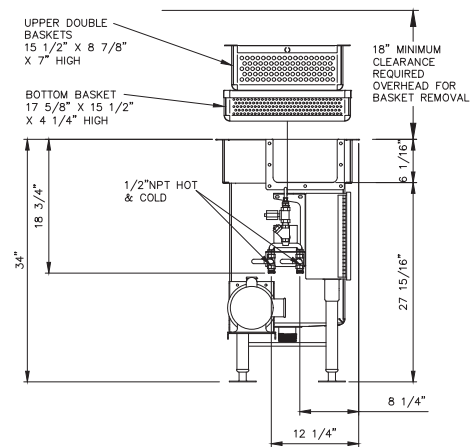
TABLE CUT OUT DETAILS



TOP FLANGE DETAILS

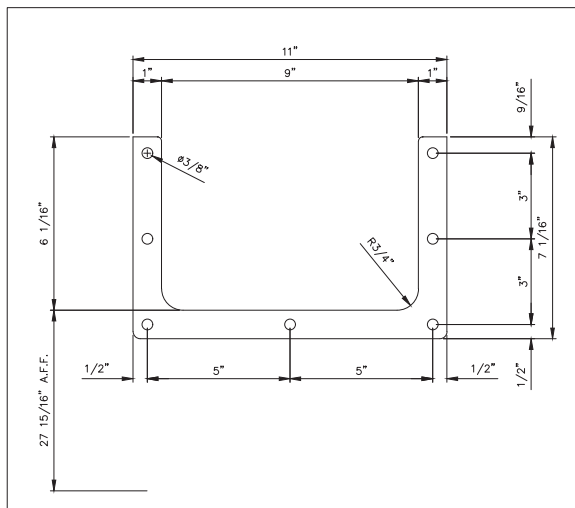


WASTE COLLECTOR DETAILS WITH TROUGH

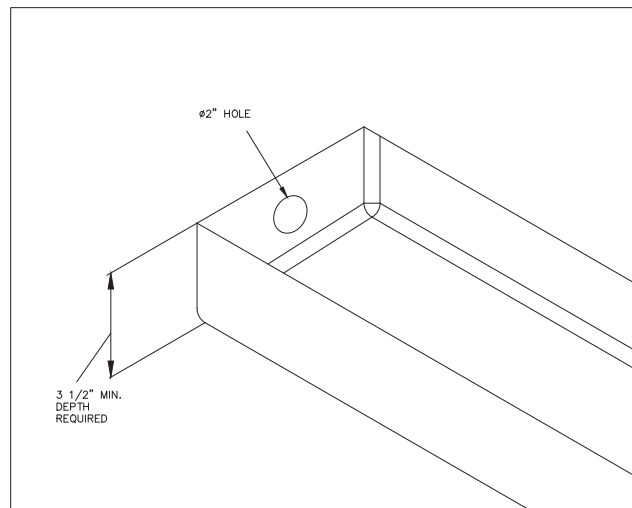


SECTION A-A

TROUGH FLANGE DETAILS



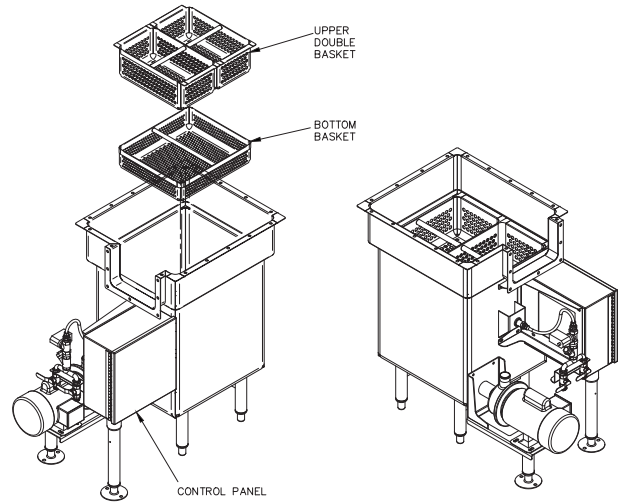
END GUSHER CUT OUT DETAILS



AEROWERKS WASTE COLLECTOR ELECTRICAL SPECIFICATION

AVAILABLE VOLTAGE	115V	208V-230V	208V-240V	480V
	1 PHASE	1 PHASE	3 PHASE	3 PHASE
	50/60 Hz	50/60 Hz	50/60 Hz	50/60 Hz
MOTOR H.P.	1/3	1/3	1/3	1/3
FULL LOAD (A)	11	3.3-3.6	1.6	0.8
SELECTOR	<input type="checkbox"/>	<input type="checkbox"/>	<input type="checkbox"/>	<input type="checkbox"/>

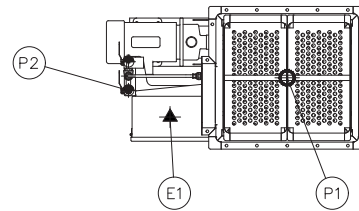
- NEMA 4X CONTROL PANEL
- WATER TIGHT CABLING
- ELECTRICAL SHOCK PREVENTION
- MOTOR WITH OVERLOAD PROTECTION
- 24VDC LOW VOLTAGE CONTROL CIRCUIT



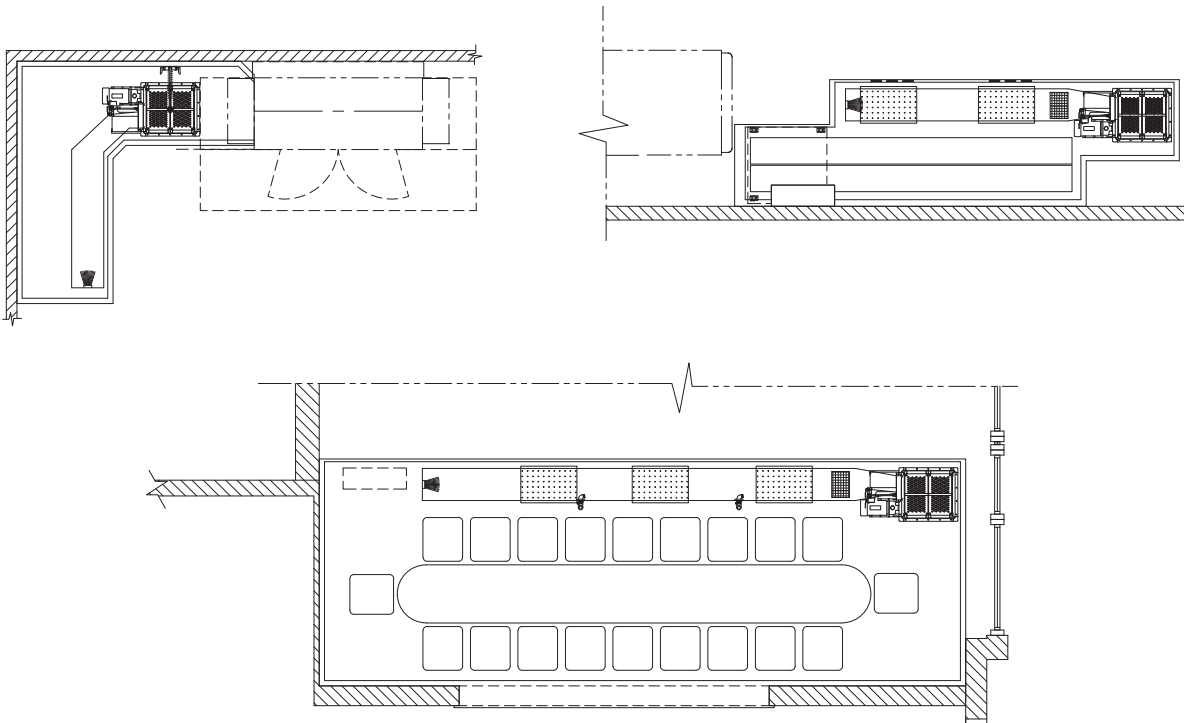
ISOMETRIC VIEWS

PLUMBING & ELECTRICAL CONNECTIONS

P1	2" DIA. DRAIN
P2	1/2" DIA. HOT & COLD WATER SUPPLY
E1	WASTE COLLECTOR ELECTRIC POWER



TYPICAL AEROWERKS WASTE COLLECTOR INSTALLATION



20'-0" LONG & 12" WIDE TROUGH WITH SIDE GUSHERS SPACED 3'-0" - 4'-0" APART TO ACCOMMODATE OPERATORS.